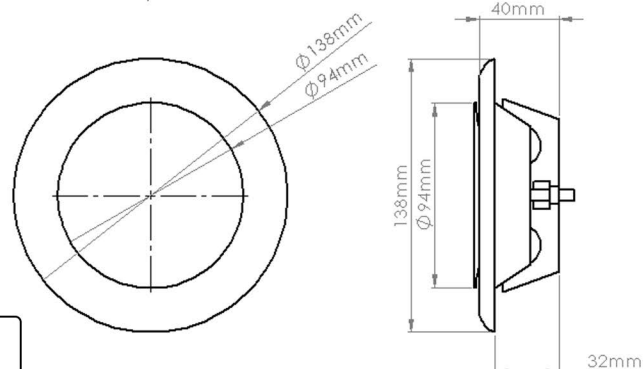
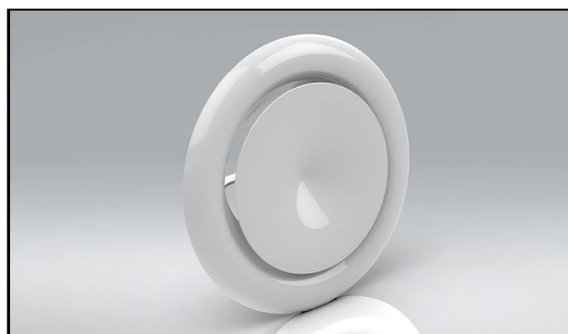


# PRODUCT DATA SHEET

## MW105

WHITE METAL CEILING AIR SUPPLY VALVE



☐ RAL9016

MANUFACTURER:	VERPLAS LTD
PART NUMBER:	MW105
SIZE:	100mmØ
FOR USE WITH:	VERPLAS SYSTEM 100
BOX QUANTITY:	7
INDIVIDUAL WEIGHT:	270g
COLOUR	White
MIN OPERATING TEMP	-15°C
MAX OPERATING TEMP	+60°C

### SPECIFICATION DETAILS

The MW105 100mm diameter Round White Metal Ceiling Air Supply Valve is manufactured from White Epoxy Powder Coated Steel and has minimum free area of 2,842mm<sup>2</sup> with Control Disc 10mm open. It has a male spigot for connection inside of the System 100mm duct.

The MW105 supply air valve is fully adjustable and has a locking nut to fix the position of the control disc upon commissioning.

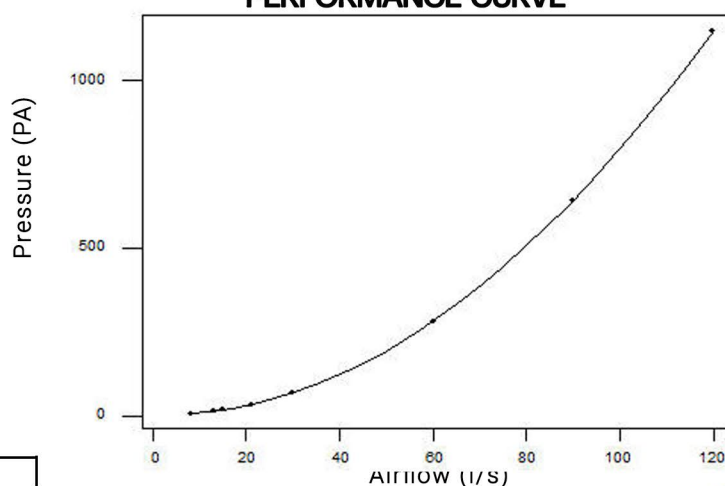
The MW105 is supplied complete with a fixing body with pre-drilled holes for installation.

MW105 has been designed for use with Verplas System 100 Round.

### AIRFLOW RESISTANCE

8 l/s	6.15 pa
13 l/s	12.35 pa
21 l/s	32.50 pa
30 l/s	53.70 pa
60 l/s	280.00 pa
120 l/s	1150.00 pa

### PERFORMANCE CURVE



### Associated Ancillaries

VKC2992  
100mmØ 2m  
Round Pipe

VKC19  
100mmØ Round  
Wall Plate

VKC300  
100mmØ 90°  
Round Elbow Bend

